

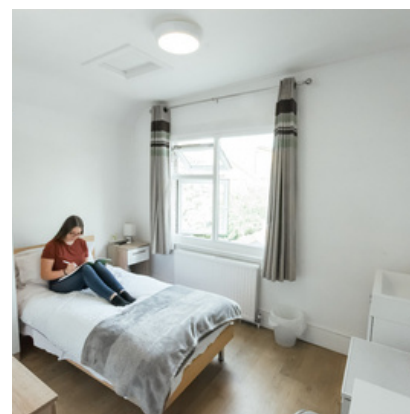


Wimbledon
School of English
London

Engage, Educate, Empower

Kings Lodge, SW19 8PL

Superior
Student House Share



What's included?

- Kitchen equipment (cutlery, plates, saucepans, etc)
- Bed Linen
- Towels are NOT included
- WiFi
- Laundry Facilities (Washing Machine and Tumble Dryer, Iron)
- Hairdryer
- TV and DVD player
- Communal areas are cleaned daily, study-bedroom and bath/shower rooms are cleaned weekly

Location

Click here to see the location on Google Maps

Kings Lodge is in the middle of Wimbledon, just a few minutes away from all facilities. The school is only 10 minutes away on foot.

Bedrooms

The bedrooms are bright and well decorated:

- 9 en-suite bedrooms
- Twin, Single and Double rooms available
- Each room includes a bed, secure safety deposit box, chair, desk, wardrobe, TV.

Communal Facilities

- A large, well equipped kitchen/dining/sitting area with all facilities including cooker, microwave, dishwasher, fridge/freezer, TV with cable connection & DVD player
- Laundry room with iron, washing machine & clothes dryer
- Sunny outside garden
- WIFI throughout the building



Please Note

- No smoking is allowed anywhere in the house or garden
- There is a maximum of 11 students at any time in Kings Lodge
- Minimum age: 18
- Assisted check-in, without fee, on Saturdays only between 13:00 and 17:00. Outside these times there is a key box facility for self check-in between 17:00 & 21:00 on Saturdays and on Sundays between 09:00 and 21:00.
- If you prefer an assisted check-in outside these times there is a charge of £90.00. Paid assisted check-in is available on Saturdays between 17:00 - 20:00 and on Sundays between 09:00 - 20:00.
- CCTV in communal areas only

Booking Terms & Conditions

www.wimbledon-school.ac.uk/school/terms-and-conditions



Wimbledon School of English Limited Registered in England No. 2595499



Wimbledon School of English,
41 Worple Road,
Wimbledon
London SW19 4JZ

T +44 20 8947 1921
F +44 20 8944 0275
E info@wimbledon-school.ac.uk
www.wimbledon-school.ac.uk



Wimbledon
School of English
London

Engage, Educate, Empower

Queens Lodge, SW20 8QE

Superior
Student House Share



What's included?

- Kitchen equipment (cutlery, plates, saucepans, etc)
- Bed linen
- WiFi
- Laundry facilities (washing machine and tumble dryer, iron)
- TV and DVD player
- Communal areas are cleaned daily, study-bedroom and bath/shower rooms are cleaned weekly
- Towels are NOT included

Location

Click here to see the location on Google Maps

Queens Lodge is located between Wimbledon Centre and Raynes Park, approximately 10 minutes walk to each. The house is about 10 minutes walk to Wimbledon School of English.

Bedrooms

- 5 en-suite bedrooms
- 1 bedroom with private shower-room
- Each room includes a bed, secure safe, chair, desk, TV, and storage cupboard

Booking Terms & Conditions

www.wimbledon-school.ac.uk/school/terms-and-conditions



Communal Facilities

- A large, well equipped kitchen/dining/sitting area with all facilities including cooker, microwave, dishwasher, fridge/freezer, TV with cable connection & DVD player.
- Laundry room with iron, washing machine & clothes dryer
- Sunny outside garden
- Wifi throughout the building

Please Note

- No smoking is allowed anywhere in the house or garden.
- There is a maximum of 6 students allowed at any one time in Queens Lodge so bedrooms cannot be shared.
- Minimum age: 18
- Assisted check-in, without fee, on Saturdays only between 13:00 and 17:00. Outside these times there is a key box facility for self check-in between 17:00 & 21:00 on Saturdays and on Sundays between 09:00 and 21:00.
- If you prefer an assisted check-in outside these times there is a charge of £90.00. Paid assisted check-in is available on Saturdays between 17:00 - 20:00 and on Sundays between 09:00 - 20:00.
- CCTV in communal areas only



Wimbledon School of English Limited Registered in England No. 2595499

Accredited by the
BRITISH COUNCIL
for the teaching
of English in the UK



Wimbledon School of English,
41 Worple Road,
Wimbledon
London SW19 4JZ

T +44 20 8947 1921
F +44 20 8944 0275
E info@wimbledon-school.ac.uk
www.wimbledon-school.ac.uk



Wimbledon School of English London

Engage, Educate, Empower

Justin James, SW19 4JZ

Superior

Serviced Hotel Room

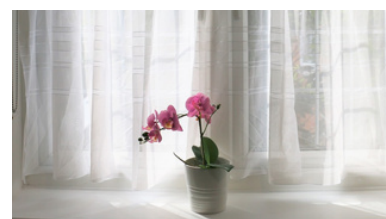
What's included?

- Light breakfast
- Kitchen equipment (cutlery, plates, saucepans, etc)
- Bed linen and towels (laundered weekly)
- WiFi
- Laundry facilities include washing machine, dryer, iron & ironing board
- Weekly cleaning

Location

Click here to see the location on Google Maps

This really is a great location right next to the school and just minutes away from the station, shops, restaurants, bars, cafes and other facilities in central Wimbledon



Bedrooms

The bedrooms are light, bright and well decorated:

- En-suite single bedrooms
- Large double en-suite bedrooms
- Twin en-suite bedrooms
- TV and kettle in each room
- Every room includes a bed, secure safe, chair, desk and storage cupboard

Facilities

- Shared kitchen/Laundry room
- Communal sitting/dining room
- Lovely private outside courtyard seating area

Please Note

- No smoking is allowed anywhere in the residence
- CCTV in communal areas only
- Minimum age: 18
- Key box facility for self check-in between 13:00 & 21:00 on Saturdays and between 09:00 and 21:00 on Sunday
- There is no assisted check-in available for Justin James



Booking Terms & Conditions

www.wimbledon-school.ac.uk/school/terms-and-conditions



Wimbledon School of English Limited Registered in England No. 2595499



Wimbledon School of English,
41 Worples Road,
Wimbledon
London SW19 4JZ

T +44 20 8947 1921
F +44 20 8944 0275
E info@wimbledon-school.ac.uk
www.wimbledon-school.ac.uk



Cottenham Park 1, SW20 0DS

Standard Plus Student House Share

What's included?

- Kitchen equipment (cutlery, plates, saucepans, etc)
- Bed linen
- WiFi
- Laundry facilities (washing machine and iron)
- TV in each room
- Communal areas are cleaned weekly, study-bedroom and bath/shower rooms are cleaned weekly
- Towels are NOT provided. Please bring your own towel

Location

Click here to see the location on Google Maps

Cottenham Park 1 is located in Raynes Park, approximately 30 minutes walk from Wimbledon School of English, or a 20-minute bus journey from Wimbledon Town Centre and the school.



Bedrooms

The bedrooms are bright and well decorated:

- 2 large en-suite bedrooms
- 2 single rooms with private bathroom
- 1 standard room with shared bathroom
- 1 large room with shared bathroom
- Every room includes a bed, secure safe, chair, desk and storage cupboard.

Communal Facilities

- Large, well-equipped kitchen and dining areas with all facilities including cooker, microwave, dishwasher, fridge/freezer
- Laundry room with iron and washing machine
- Sunny outside garden
- Wifi throughout the building.

Please Note

- No smoking is allowed anywhere in the house or garden
- There is a maximum of 6 students allowed at any one time in Cottenham 1, so bedrooms cannot be shared.
- CCTV in communal areas only
- Minimum age: 18
- Assisted check-in, without fee, on Saturdays only between 13:00 and 17:00. Cottenham Park does not have any key box facility.
- If you prefer an assisted check-in outside these times there is a charge of £90.00. Paid assisted check-in is available on Saturdays between 17:00 - 20:00 and on Sundays between 09:00 - 20:00.

Booking Terms & Conditions

www.wimbledon-school.ac.uk/school/terms-and-conditions



Wimbledon School of English Limited Registered in England No. 2595499



Wimbledon
School of English
London

Engage, Educate, Empower

Cottenham Park 2, SW20 0DS

Standard Plus

Student House Share

What's included?

- Kitchen equipment (cutlery, plates, saucepans, etc)
- Bed linen
- WiFi
- Laundry facilities (washing machine and iron)
- TV in each room
- Communal areas are cleaned weekly, study-bedroom and bath/shower rooms are cleaned weekly
- Towels are NOT provided. Please bring your own towel

Location

Click here to see the location on Google Maps

Cottenham Park 2 is located in Raynes Park, approximately 30 minutes walk from Wimbledon School of English, or a 20-minute bus journey from Wimbledon Town Centre and the school.



Bedrooms

The bedrooms are bright and well decorated:

- 2 large en-suite bedrooms
- 2 single rooms with private bathroom
- 1 standard room with shared bathroom
- 1 large room with shared bathroom
- Every room includes a bed, secure safe, chair, desk and storage cupboard.

Communal Facilities

- Large, well-equipped kitchen and dining areas with all facilities including cooker, microwave, dishwasher, fridge/freezer
- Laundry room with iron and washing machine
- Sunny outside garden
- Wifi throughout the building.

Please Note

- No smoking is allowed anywhere in the house or garden
- There is a maximum of 6 students allowed at any one time in Cottenham 2, so bedrooms cannot be shared.
- CCTV in communal areas only
- Minimum age: 18
- Assisted check-in, without fee, on Saturdays only between 13:00 and 17:00. Cottenham Park does not have any key box facility.
- If you prefer an assisted check-in outside these times there is a charge of £90.00. Paid assisted check-in is available on Saturdays between 17:00 - 20:00 and on Sundays between 09:00 - 20:00.

Booking Terms & Conditions

www.wimbledon-school.ac.uk/school/terms-and-conditions



Wimbledon School of English Limited Registered in England No. 2595499



Wimbledon School of English,
41 Worple Road,
Wimbledon
London SW19 4JZ

T +44 20 8947 1921
F +44 20 8944 0275
E info@wimbledon-school.ac.uk
www.wimbledon-school.ac.uk



Wimbledon
School of English
London

Engage, Educate, Empower

Beverley Lodge, SW20 0AQ

Superior
Student House Share

What's included?

- Kitchen equipment (cutlery, plates, saucepans, etc)
- Bed linen
- WiFi
- Laundry facilities (washing machine and iron)
- TV in each room
- Communal areas are cleaned weekly, study-bedroom and bath/shower rooms are cleaned weekly
- Towels are NOT provided. Please bring your own towel

Location

[Click here](#) to see the location on [Google Maps](#)

Transport to/from WSE and Wimbledon town centre: 25 minutes by bus - 45 minutes' walk - 15 minutes by bike



Bedrooms

The bedrooms are bright and well decorated:

- 6 en-suite bedrooms with double beds (single occupancy)
- Every room includes a bed, secure safe, chair, desk and storage cupboard

Communal Facilities

- Large, well-equipped kitchen and dining areas with all facilities including cooker, microwave, dishwasher, fridge/freezer
- Laundry room with iron and washing machine
- Sunny outside garden
- Wifi throughout the building



Please Note

- No smoking is allowed anywhere in the house or garden
- There is a maximum of 6 students at any time in Beverley Lodge
- Minimum age: 18
- Assisted check-in, without fee, on Saturdays only between 13:00 and 17:00. Outside these times there is a key box facility for self check-in between 17:00 & 21:00 on Saturdays and on Sundays between 09:00 and 21:00.
- If you prefer an assisted check-in outside these times there is a charge of £90.00. Paid assisted check-in is available on Saturdays between 17:00 - 20:00 and on Sundays between 09:00 - 20:00.
- CCTV in communal areas only

Booking Terms & Conditions

www.wimbledon-school.ac.uk/school/terms-and-conditions



Wimbledon School of English Limited Registered in England No. 2595499



Wimbledon School of English,
41 Worple Road,
Wimbledon
London SW19 4JZ

T +44 20 8947 1921
F +44 20 8944 0275
E info@wimbledon-school.ac.uk
www.wimbledon-school.ac.uk



Wimbledon
School of English
London

Engage, Educate, Empower

St. George's Residence, SW17 0BD
Self-Catering Residential Accommodation
Available 12th July to 2nd August 2025

Key features:

- Ages 18+
- Lovely location with restaurants, shops & cafes nearby
- Well equipped communal kitchens
- Kitchen & communal areas are cleaned weekly
- Bedding & kitchen pack included
- Door to door journey time: 25 minutes to WSE
- Shared kitchen and a sitting room with comfortable seating and a large plasma-screen television, where you can relax and meet friends

Location & Area Information

St George's Residence is just 10 minutes walk away from Earlsfield which has numerous shops, cafes, restaurants, pubs and bars. The Leather Bottle (12 minutes' walk) is a beautiful traditional pub with a large garden where you can sit outside and enjoy the sun. The lively district of Tooting is 20 minutes walk in the other direction. It has a wide range of shops ranging from supermarkets & large stores to small independent shops, as well as numerous cafes, restaurants & pubs.

Tooting Market is a popular meeting place with a great selection of pop up street food stalls, bars, cafes and a microbrewery.

[Click here](#) to see the location on [Google Maps](#) 

Bedrooms

- Single Room Ensuite

The bedrooms are light, bright and well decorated with a single bed and storage drawer, spacious wardrobe, desk and chair, bedside table

Facilities

- Free WiFi
- Secure reception staffed 24 hours a day
- Shared kitchen
- Common room
- Pool/snooker table
- Bicycle storage
- On-site laundry facilities (Pay-to-use)

Please Note

- Check-in Saturday only after 15:00 and check-out Saturday only between 09:00 and 10:00
- Best route to school: Walk 11 mins to Wimbledon Road (Stop SP) and take the 493 bus to Wimbledon, Francis Grove (Stop N), then walk 2 mins to WSE
- Alternative route: Walk or take a bus down Garratt Lane to Earlsfield Station, then take a direct train to Wimbledon station. Then WSE is a 2/3 min walk from Wimbledon station

Wimbledon School of English Limited Registered in England No. 2595499



Wimbledon School of English,
41 Worple Road,
Wimbledon
London SW19 4JZ

T +44 20 8947 1921
F +44 20 8944 0275
E info@wimbledon-school.ac.uk
www.wimbledon-school.ac.uk





Wimbledon
School of English
London

Engage, Educate, Empower

Surbiton Halls, University of Kingston
Summer Residential Accommodation
Saturday 5th July to Saturday 16th August 2025

Key features:

- 50 ensuite bedrooms
- Lovely riverside location with restaurants, shops & cafes nearby
- Well equipped communal kitchens
- Cooking utensils included
- Rooms cleaned weekly
- Towel & bedding included
- Free shuttle bus to Kingston town centre
- Door to door journey time: 30 minutes to WSE



Location

[Click here](#) to see the location on Google Maps

Surbiton Halls is right by the River Thames and is close to Surbiton town centre and railway station

Bedrooms

The bedrooms are light, bright and well decorated:

- Ensuite bedrooms
- With a desk and chair, a wardrobe, curtains/blinds, bookshelves and a notice board

Facilities

- Nice outdoor seating area
- Security – 24-hour on-call security
- Common room
- Vending machine for snacks near reception
- On-site laundry facilities (Pay-to-use)
- Bike storage
- InPost Locker



Please Note

- Ages 18+ (16+ when accompanied by 18+ guardian)
- Check-in Saturday only after 15:00 and check-out Saturday only by 10:00
- Shuttle bus runs every 45 mins to 1 hour between 08:30 and 19:30
- Best routes to school: Take the free shuttle bus to Kingston Station & then short train journey to Wimbledon. Or, take a short walk to Surbiton Station and travel to Wimbledon station

Wimbledon School of English Limited Registered in England No. 2595499



Wimbledon School of English,
41 Worple Road,
Wimbledon
London SW19 4JZ

T +44 20 8947 1921
F +44 20 8944 0275
E info@wimbledon-school.ac.uk
www.wimbledon-school.ac.uk